



## STUDENTS FEEDBACK ON CURRICULUM

ACADEMIC YEAR 2022-2023

**COURSE: B.Pharmacy**

**Total Number of Participants: 209**

S.No.	Parameters	Evaluation Parameters				
		Excellent	Very good	Good	Average	Poor
1.	How do you rate the coverage of syllabus in time?	110	53	38	8	0
2.	How do you rate the objectives stated and relevance to the course content?	60	108	36	5	0
3.	How do you rate the laboratory experiments correlate with the theory?	86	68	50	5	0
4.	How do you rate the coverage of the curriculum in catering to your professional needs?	68	75	58	8	0
5.	How do you rate the relevance of the courses in the curriculum and its contents?	75	75	58	8	0
6.	How do you rate the add on / value added courses offered to you in the curriculum?	71	77	50	11	0
7.	How do you rate the evaluation scheme designed for each of the course?	87	64	53	5	0



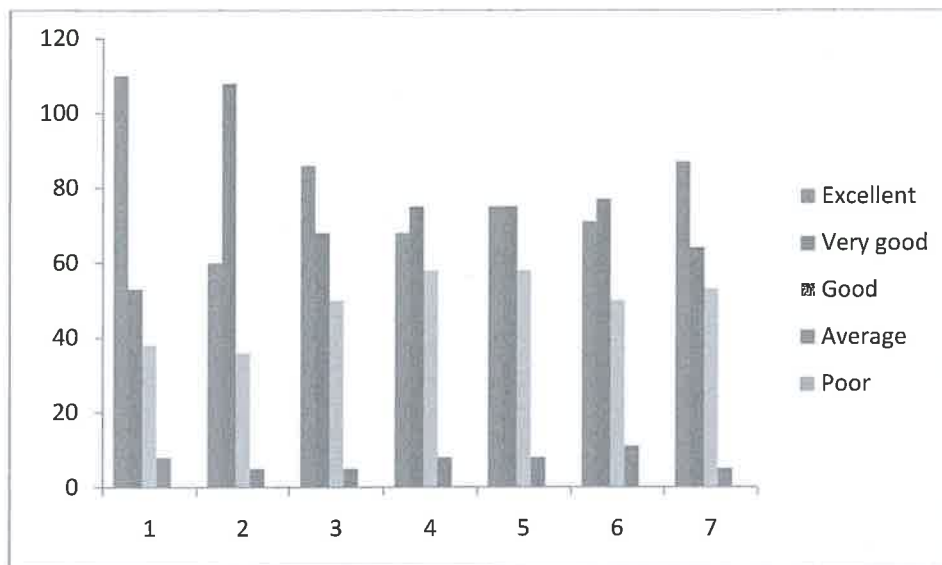
*(Handwritten signature)*

**Principal**  
**Vaagdevi College of Pharmacy**  
 Hanamakonda, Warangal-506 001

## STUDENTS FEEDBACK ON CURRICULUM

ACADEMIC YEAR 2022-2023

COURSE: B.Pharmacy



**Principal**  
**Vaagdevi College of Pharmacy**  
Hanamkonda, Warangal-506 001



## STUDENTS FEEDBACK ON CURRICULUM

ACADEMIC YEAR 2022-2023

COURSE: Pharm.D

Total Number of Participants: 36

S.No.	Parameters	Evaluation Parameters				
		Excellent	Very good	Good	Average	Poor
1.	How do you rate the coverage of syllabus in time?	7	9	20	0	0
2.	How do you rate the objectives stated and relevance to the course content?	3	14	17	2	0
3.	How do you rate the laboratory experiments correlate with the theory?	11	12	13	0	0
4.	How do you rate the coverage of the curriculum in catering to your professional needs?	4	18	13	1	0
5.	How do you rate the relevance of the courses in the curriculum and its contents?	9	7	19	1	0
6.	How do you rate the add on / value added courses offered to you in the curriculum?	8	16	11	1	0
7.	How do you rate the evaluation scheme designed for each of the course?	9	14	12	1	0



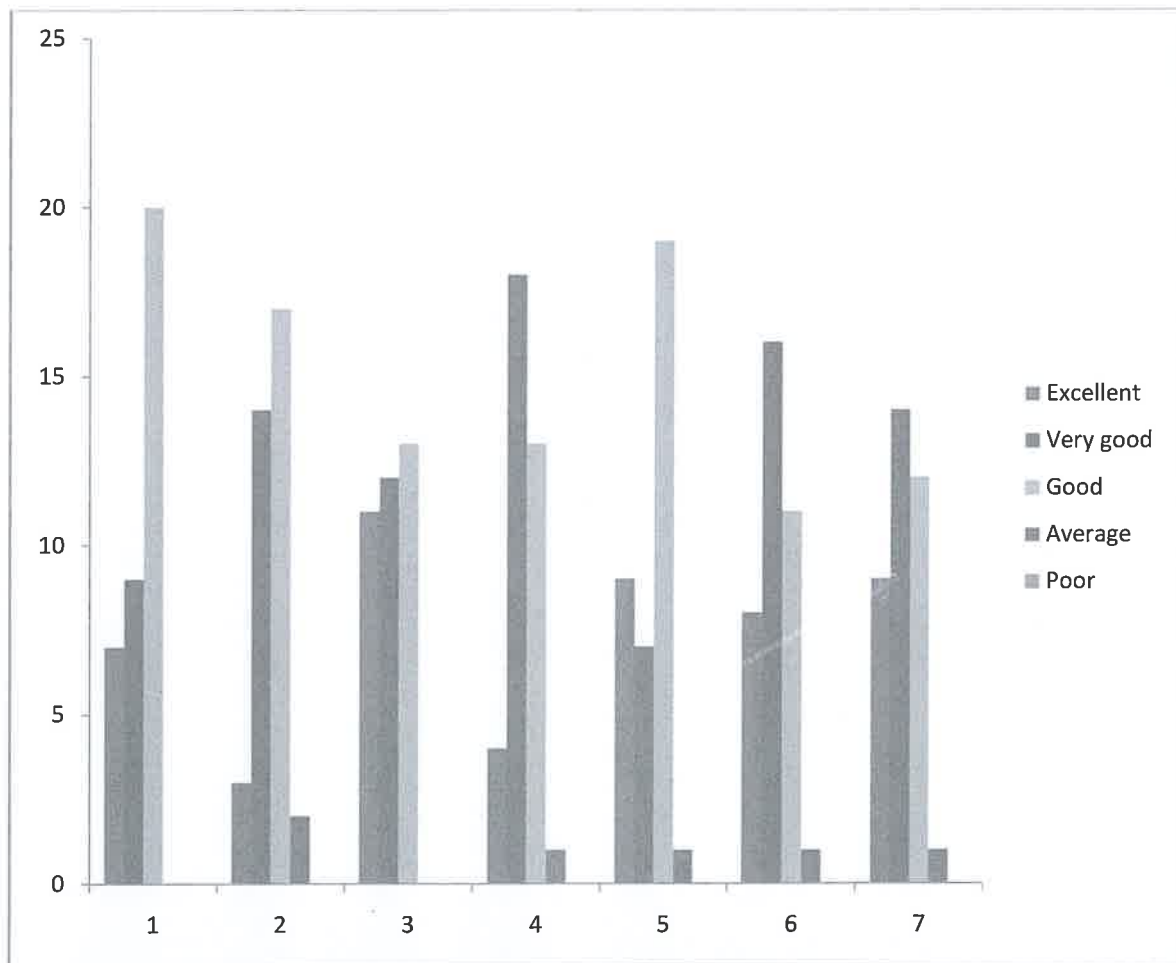
*(Signature)*

**Principal**  
**Vaagdevi College of Pharmacy**  
 Hanamkonda, Warangal-506 001

## STUDENTS FEEDBACK ON CURRICULUM

ACADEMIC YEAR 2022-2023

COURSE: Pharm.D



*Principal*  
**Vaagdevi College of Pharmacy**  
Hanamkonda, Warangal-506 001



## STUDENTS FEEDBACK ON CURRICULUM

ACADEMIC YEAR 2022-2023

COURSE: M.Pharmacy

Total Number of Participants: 43

S.No.	Parameters	Evaluation Parameters				
		Excellent	Very good	Good	Average	Poor
1.	How do you rate the coverage of syllabus in time?	24	14	4	1	0
2.	How do you rate the objectives stated and relevance to the course content?	12	21	9	1	0
3.	How do you rate the laboratory experiments correlate with the theory?	14	20	9	0	0
4.	How do you rate the coverage of the curriculum in catering to your professional needs?	18	17	8	0	0
5.	How do you rate the relevance of the courses in the curriculum and its contents?	10	20	12	1	0
6.	How do you rate the add on/ value added courses offered to you in the curriculum?	13	20	7	3	0
7.	How do you rate the evaluation scheme designed for each of the course?	15	16	12	0	0

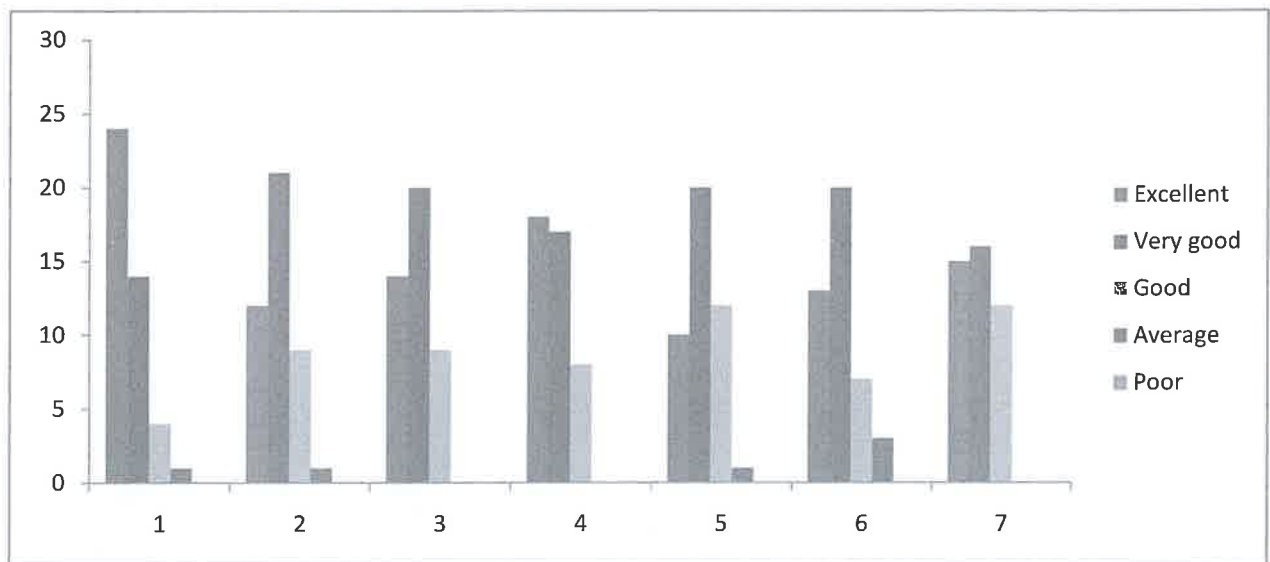


*Principal*  
**Vaagdevi College of Pharmacy**  
 Hanamakonda, Warangal-506 001

## STUDENTS FEEDBACK ON CURRICULUM

ACADEMIC YEAR 2022-2023

COURSE: M.Pharmacy



Report

Comment by Principal

ICT enabled classrooms were increased to continuation of classes for the better delivery of the course curriculum.



  
**Principal**  
**Vaagdevi College of Pharmacy**  
Hanamkonda, Warangal-508 001



**VISWAMBHARA EDUCATIONAL SOCIETY**  
**VAAGDEVI COLLEGE OF PHARMACY**  
 (Approved by AICTE & PCI, New Delhi & affiliated to Kakatiya University , Warangal, T.S)  
 Ramnagar Dist. Hanumakonda- 506001, (T.S)

**FACULTY FEEDBACK ON CURRICULUM**

**ACADEMIC YEAR 2022-2023**

**Total Number of Participants: 50**

S.No.	Parameters	Evaluation Parameters				
		Excellent	Very good	Good	Average	Poor
1.	How do you rate the coverage of the curriculum in catering to your professional needs?	35	12	3	0	0
2.	How do you rate the relevance of the courses in the curriculum in helping students to attain the program outcomes?	18	31	1	0	0
3.	How do you rate the relevance of the curriculum in relation to latest technology or emerging trends in the industry?	20	23	7	0	0
4.	How do you rate the usefulness of training given to you for effective teaching?	25	20	5	0	0
5.	How do you rate the relevance of courses in curriculum in making student employable?	24	24	2	0	0
6.	How do you rate the facilities for delivering the course content effectively?	24	22	4	0	0
7.	How do you rate the relevance of the add on / value added courses offered to the students in the curriculum?	22	21	7	0	0

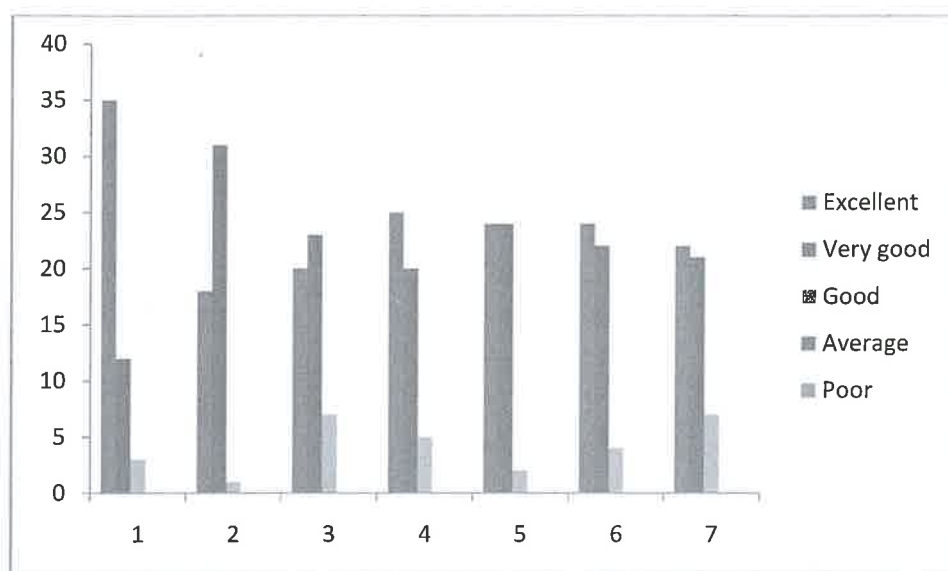


  
**Principal**  
**Vaagdevi College of Pharmacy**  
 Hanamkonda, Warangal-506 001



## FACULTY FEEDBACK ON CURRICULUM

ACADEMIC YEAR 2022-2023



### Report

#### Comment by Principal

It is instructed to all faculties to enroll in online courses available in SWAYAM portal related to their area of expertise which adds up additional knowledge.



*Principal*  
**Vaagdevi College of Pharmacy**  
Hanamkonda, Warangal-508 001





## ALUMNI FEEDBACK ON CURRICULUM

ACADEMIC YEAR 2022-2023

Total Number of Participants: 14

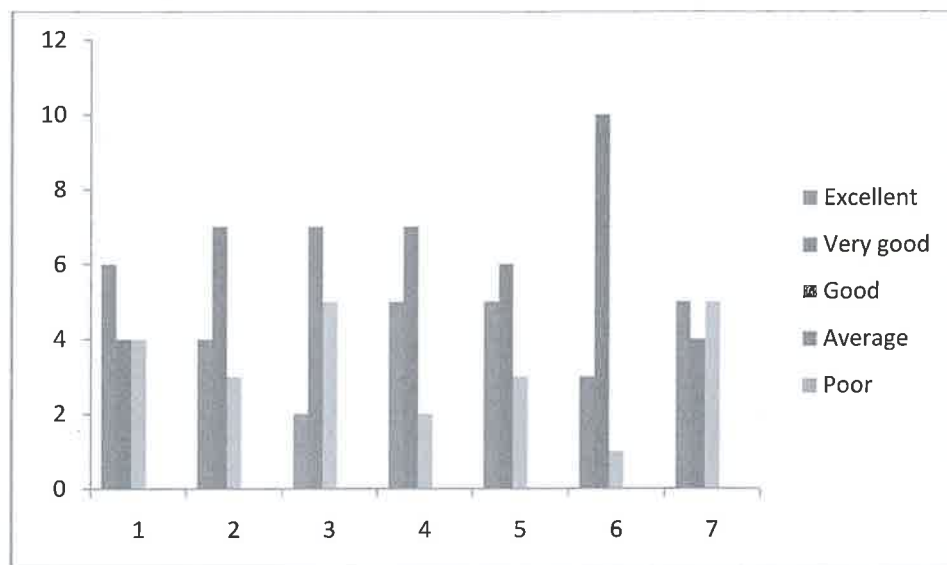
S.No.	Parameters	Evaluation Parameters				
		Excellent	Very good	Good	Average	Poor
1.	How do you rate the relevance of courses in curriculum in attaining the required skills competencies to your job?	6	4	4	0	0
2.	How do you rate the relevance of the courses in the curriculum and its contents?	4	7	3	0	0
3.	How do you rate the relevance of the curriculum in relation to latest technology or emerging trends in the industry?	2	7	5	0	0
4.	How do you rate the coverage of the curriculum in catering to your professional needs?	5	7	2	0	0
5.	How do you rate the objectives stated and relevance to the course content?	5	6	3	0	0
6.	How do you rate the add on/value added courses offered to you in the curriculum in developing disposition in your career?	3	10	1	0	0
7.	How do you rate the relevance of curriculum in career orientation?	5	4	5	0	0



*Principal*  
**Vaagdevi College of Pharmacy**  
 Hanamakonda, Warangal-506 001

## ALUMNI FEEDBACK ON CURRICULUM

ACADEMIC YEAR 2022-2023



### Report

#### Comment by Principal

As part of regular curriculum practice, we are involving Alumni for the purpose of seminar conduction and various event activities.



*Principal*

**Vaagdevi College of Pharmacy**  
Hanamkonda, Warangal-506 001



VISWAMBHARA EDUCATIONAL SOCIETY

**VAAGDEVI COLLEGE OF PHARMACY**

(Approved by AICTE & PCI, New Delhi & affiliated to Kakatiya University, Warangal, T.S)  
Ramnagar Dist. Hanamakonda- 506001. (T.S)

## EMPLOYER FEEDBACK ON CURRICULUM

ACADEMIC YEAR 2022-2023

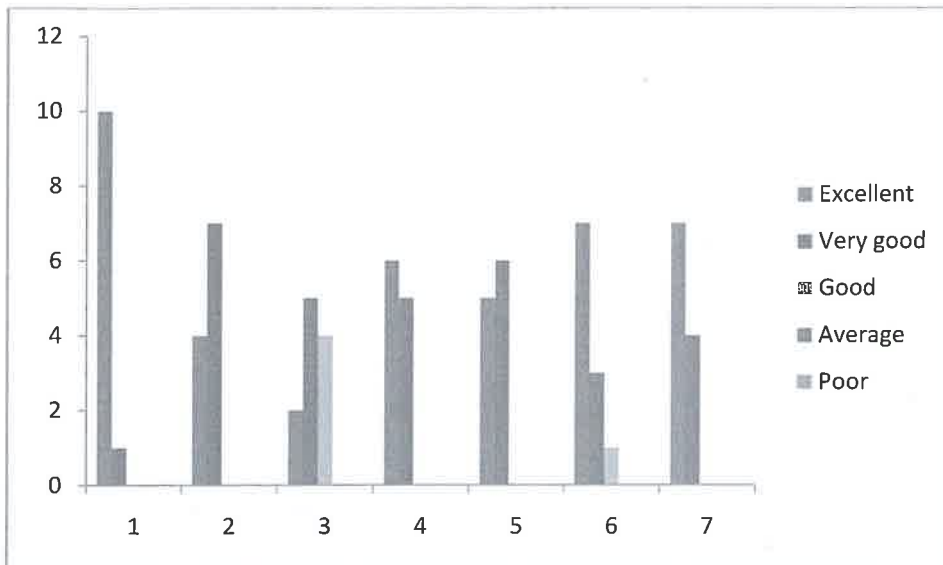
Total Number of Participants: 11

S.No.	Parameters	Evaluation Parameters				
		Excellent	Very good	Good	Average	Poor
1.	How would you rate the current curriculum in relevant in developing the industry expected outcomes from the candidate?	10	1	0	0	0
2.	How do you rate the curriculum is relevant in developing a dedicated attitude in the candidate?	4	7	0	0	0
3.	How do you rate the current curriculum is relevant in addressing the needs/problems of the client groups?	2	5	4	0	0
4.	How would you rate the proficiency of our students working with you?	6	5	0	0	0
5.	Skill sets	5	6	0	0	0
6.	Competencies	7	3	1	0	0
7.	Disposition	7	4	0	0	0



  
**Principal**  
**Vaagdevi College of Pharmacy**  
Hanamakonda, Warangal-506 001

**EMPLOYER FEEDBACK ON CURRICULUM  
ACADEMIC YEAR 2022-2023**



Report

Comment by Principal

Industry visits are arranged to enrich the education.



*Principal*  
**Vaagdevi College of Pharmacy**  
Hanamkonda, Warangal-506 001